

[Available in Korea]

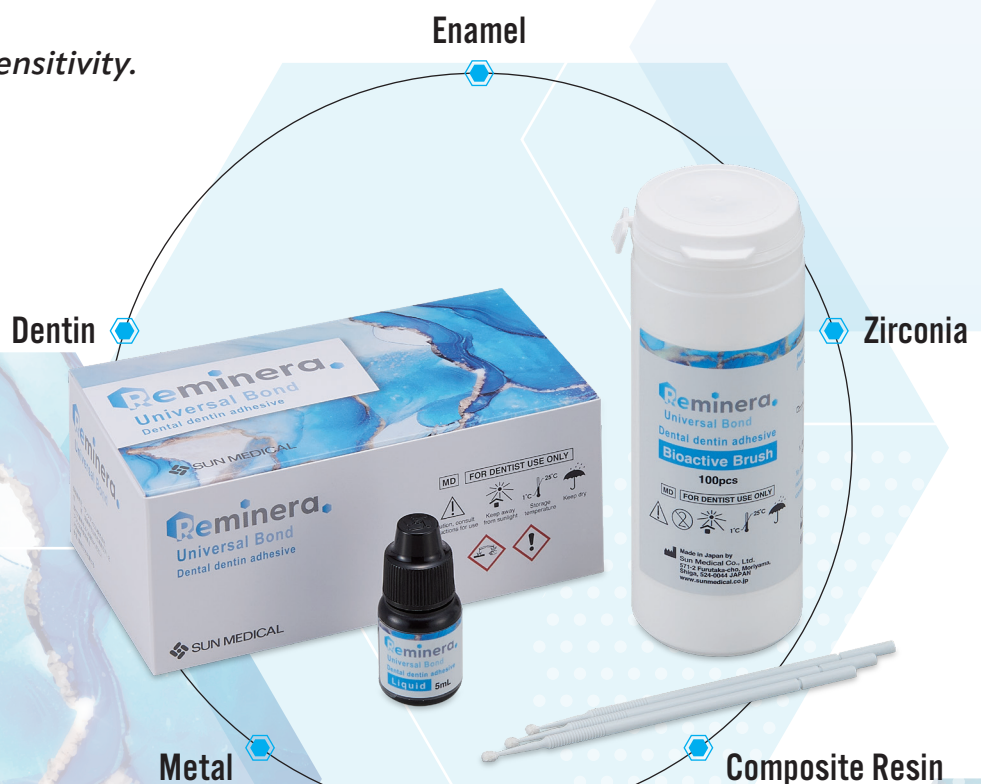
 **SUN MEDICAL**

Reminera.
Universal Bond
Dental dentin adhesive

Beyond the Future with Reminera

One Bond for Every Application!

- ✓ **Bonding Agent**
Adhesion for enamel, dentin, and prosthetics.
- ✓ **Primer**
Cementation for prosthetic and tooth surfaces.
- ✓ **Sealing and Coating**
Protects abutments, cavities, and exposed surfaces.
- ✓ **Desensitizer**
Effective relief for hypersensitivity.



What Makes Reminera Universal Bond Exceptional?

01. Strong Bond to Enamel, Dentin, and Prosthetics.



Powered by the newly developed High-PA* Monomer™, created by Mitsui Chemicals, Inc. (Tokyo, Japan), offering enhanced adhesion and penetration for strong bonding strength.

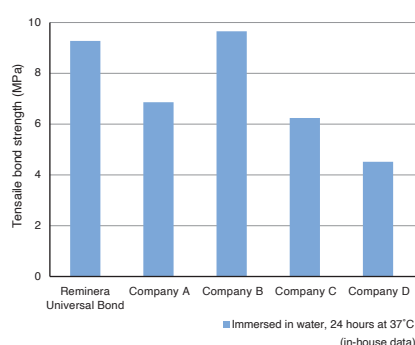
*High-PA = High Permeation & Adhesion



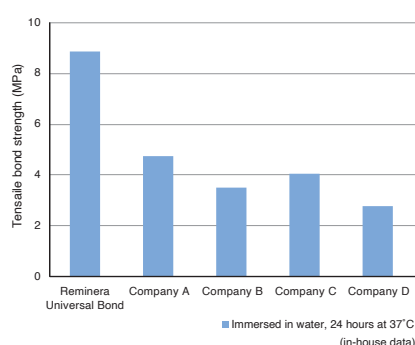
Durable bonding performance

It offers competitive bond strength to competitor products.

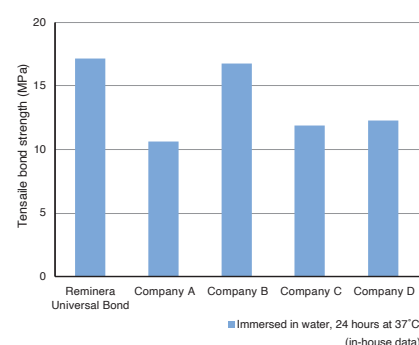
[Tensile bond strength to bovine enamel]



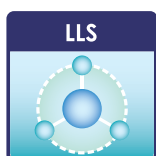
[Tensile bond strength to bovine dentin]



[Tensile bond strength to zirconia]



02. Long Lasting Primer for Prosthetics

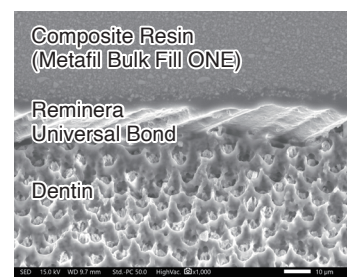


Incorporates LLS*, newly developed silane coupling agent, designed to maintain stability for longer period even in acidic environments, ensuring optimal adhesion for prosthetic surfaces.

*LLS=Long Lasting Silane

03. Thin Adhesive Layer: Only 5µm

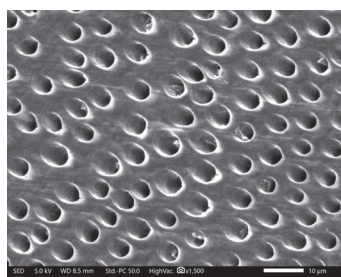
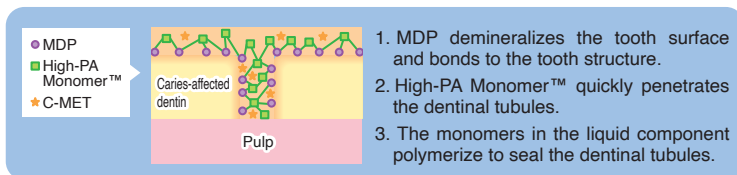
Creates a highly durable yet thin adhesive layer (only 5µm), delivering seamless aesthetics for cases requiring the highest precision.



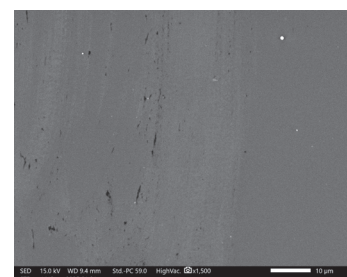
04. Versatility Beyond Bonding

The MDP and High-PA Monomer™ deeply penetrate dentinal tubules, creating a strong, light-polymerized bond to seal them effectively to:

- Provide effective desensitization for dental hypersensitivity
- Act as a protective sealing coating for cavities and abutments.



Opened dentinal tubules



Sealed dentinal tubules after applied Reminera Universal Bond

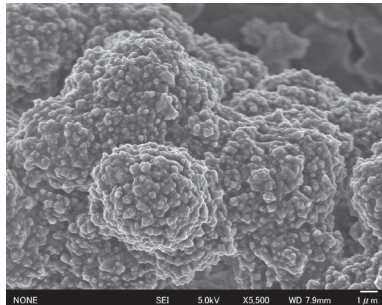
Features of Reminera Universal Bond Bioactive Brush

01. Reminera Universal Bond Bioactive Brush with C-MET

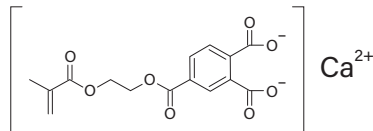
Reminera Universal Bond Bioactive Brush contains C-MET*, a novel functional monomer designed to enhance dentin regeneration.

C-MET* promotes the formation of hydroxyapatite-like crystals, fostering better bond strength and biocompatibility.

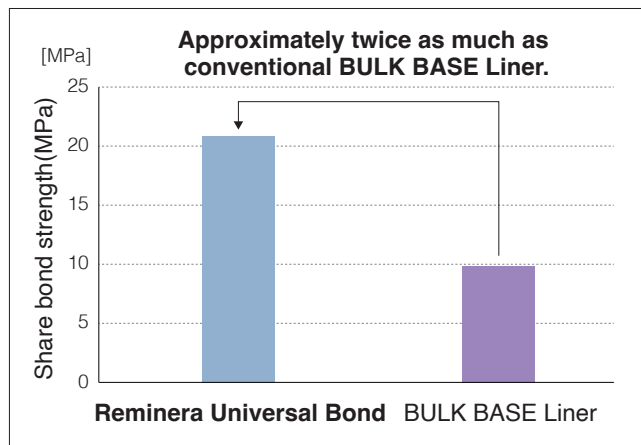
Qiu YJ, Tang J, Saito T.(2020) A novel bioactive adhesive monomer induces odontoblast differentiation: a comparative study. Journal of Endodontics 53, 1413 1429



(image)



*C-MET: Calcium salt of 4-MET



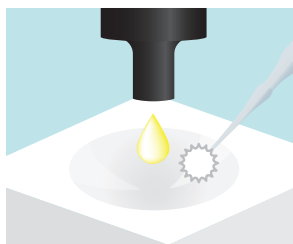
(in-house data)

02. Dual-Cure Performance

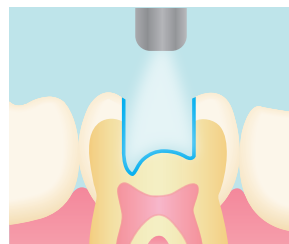
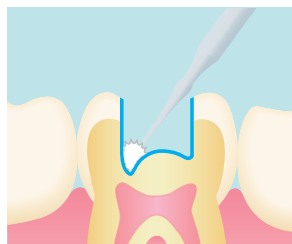
Reminera Universal Bond Bioactive Brush also features dual-cure capabilities, ensuring reliable bonding even in areas where light penetration is limited, such as deep cavities.

How to use

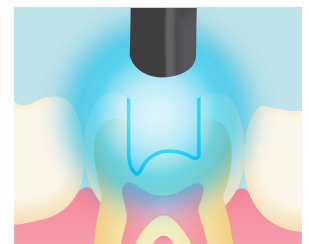
NO
waiting time!



Agitate the bond with the Bioactive Brush and apply to the cavity.



Gently air dry until the liquid is fully evaporated.



Light cure for 5 seconds.