

Bonding Agent for Resin-based Dental Restorations
and Protective Coat for Dentin

Hybrid Bond

Only 35 seconds!!



- **No etching, Just one coat**
- **Chemically-activated Microbrushes[®] eliminate mixing**
- **Any curing light**
- **Thin but robust film**



Hybrid Bond

◇Direct restoration with composite



Applying



Light-curing



Polishing the cured composite



Completed

◇Indirect restoration



Prepared tooth (buccal view)



Prepared tooth (occlusal view)



Coating



Ready to take impression

EASY, 35-SECOND BONDING

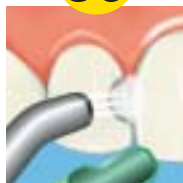
No etching, just one coat

The entire bonding procedure takes 35 seconds, start-to-finish.

ONLY **35** SECONDS!!



Apply
20 sec



Dry
10 sec



Light-cure
5 sec

ANY COMPOSITE, ANY LIGHT

Halogen, Xenon (Plasma Arc) or even LED

Hybrid Bond adheres to all types of composite (light-cure, self-cure, dual cure) and cures with any light.

HIGH BOND STRENGTH

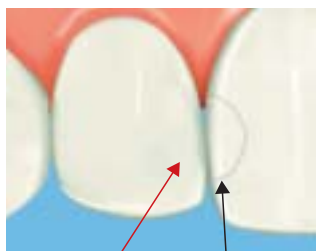
Strong bonds to enamel, dentin and resin composite... thanks to its 4-META monomer

Hybrid Bond penetrates the tooth to form 4-META hybrid layer and leaves the surface protective by a robust resin film.

THIN BUT ROBUST FILM

Only 9 microns but almost no post-op sensitivity

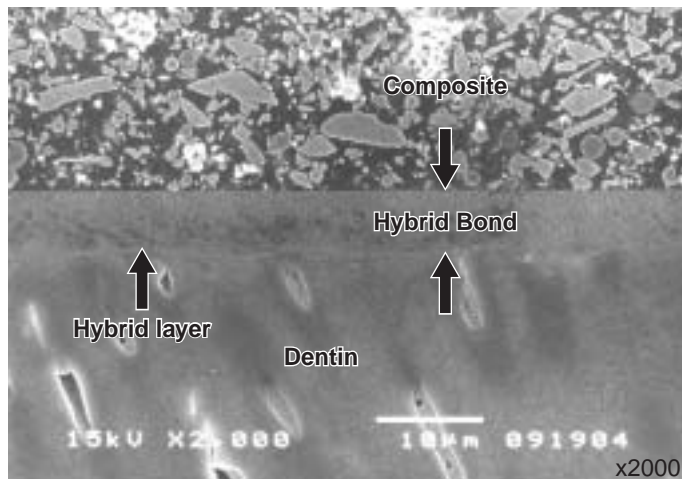
Though only a single application is required, the robust coat blocks both mechanical and chemical stimuli to dentin-pulp complex.



Hybrid Bond

Competitive product

The thin bonding layer results in aesthetic margins and perfect contacts between adjacent teeth.



Provided by Dr. T.Nikaido, Tokyo Medical and Dental University

Made in Japan by

SUN MEDICAL CO.,LTD.

571-2, Furutaka-cho, Moriyama, Shiga, 524-0044, Japan
Phone:81-77-582-9981 Fax:81-77-582-9984
URL <http://www.sunmedical.co.jp/e-main/>