

Excellent Polishability

Flowable, Light-curing, Radiopaque
Hybrid Resin-based Dental Restorative Material

Metafil **Flo**

*Optimal Flow Consistency
Low Water Sorption – Resists Stains
High Durability, with Fillers Loaded*

Shades _____

- A1
- A2
- A3
- A3.5
- B2
- Opaque





Metafil Flo is a highly-adaptable resin composite. It contains inorganic fillers and a unique organic filler which is very reactive with the matrix resin. This assures superior handling and highly wear-resistant restoration. Metafil Flo is radio-opaque, with low shrinkage and deep depth of cure, it is suitable to use for base build up material as well.

Typical Applications

Restoration of Attrition



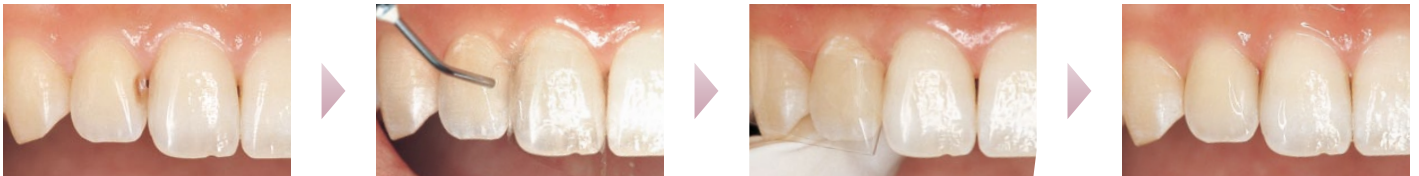
Metafil Flo has high wear resistance for restoring attrition.

Cervical Lesion



Higher flexural strength of Metafil Flo will decrease the dislodging of restoration.

Restoration of Proximal Cavity



As a quick polish, Metafil Flo is highly esthetic and ideal for anterior restoration.

Restoration of Sallow Enamel Lesions / Sealants

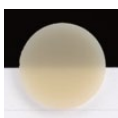


Metafil Flo is highly wear-resistant and can be used for small enamel lesions / sealants.

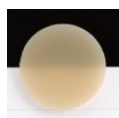
Shades



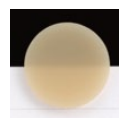
A1



A2



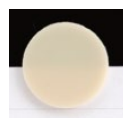
A3



A3.5



B2



Opaque