

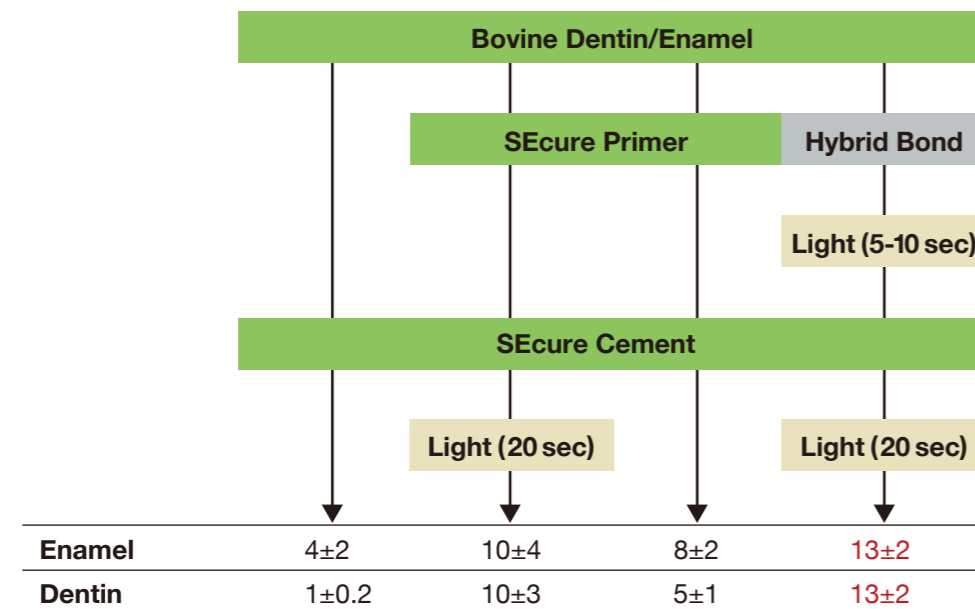
## FOR HYBRID BOND USERS

SEcure works beautifully with Hybrid Bond (see chart below).

So if you already use Hybrid Bond to hybridize and protect the preparation, there's no need to order the SEcure Primer.

Just order a refill syringe of the SEcure Cement.

### Tensile bond strength of SEcure to tooth (MPa)



As you can see, unless the SEcure Primer or Hybrid Bond is first applied to the tooth, the SEcure paste will form only a minimal bond to dentin.

That's why we recommend always using SEcure with a primer – either the SEcure Primer or Hybrid Bond.

### CEMENTATION OF A CERAMIC CROWN



Before



Apply SEcure Primer.  
Keep the prep wet for 10-20 sec.  
Then air-blow gently to dry.



Fill restoration with SEcure  
cement using Translucent shade



Seat crown and light-cure for 1-2 sec,  
or allow it to self-cure for 2 min



Remove excess cement



Light-cure (20 sec) or self-cure  
(3 min total in the mouth)



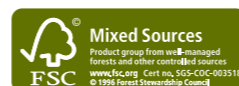
After 1 year

(by courtesy of Dr.Loufrani- Dr.Launois, France)

Made in Japan by

SUN MEDICAL CO.,LTD.

571-2 Furutaka-cho, Moriyama,  
Shiga, 524-0044, Japan  
Phone:81-77-582-9981 Fax:81-77-582-9984  
<http://www.sunmedical.co.jp>



**SEcure**  
Dual-cure  
Resin cement

[www.sunmedical.co.jp](http://www.sunmedical.co.jp)

# SEcure

Self-etching Dual-cure Resin Cement



amazing sealing properties  
reliable bond strength  
extremely easy to use

That's SEcure

# SEcure

New SEcure's 4-META adhesion brings you incredible sealability, to protect the tooth from marginal leakage, and sensitivity.

Yet it's extremely easy to use.

## PROTECT THE TOOTH FROM MARGINAL LEAKAGE



Indirect resin restorations were cemented on extracted teeth using either SEcure or one of the 8 most popular self-adhesive cements. The teeth were then mechanically loaded 400,000 times to simulate mastication, and subjected to 5,000 thermocycles. They were soaked in blue dye for 24 hours, and then sectioned longitudinally at two locations to reveal leakage.

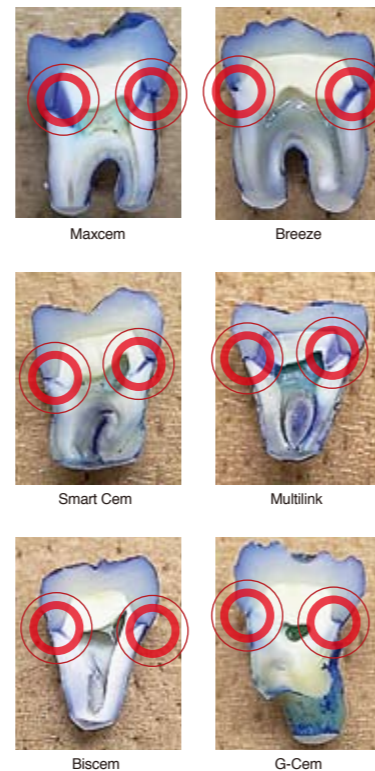
As you can see, the difference between SEcure and the other adhesives was dramatic.

## Exceptional Bond Strength

SEcure shows significantly higher tensile bond strength to tooth structure than most other simplified adhesives.

| ADHESIVE CEMENT                        | Tensile bond to ENAMEL (MPa)                  | Tensile bond to DENTIN (MPa)                  |
|--|---|---|
| <b>SEcure</b><br>(SUN MEDICAL)         | <b>8</b> (light-cure)<br><b>8</b> (self-cure) | <b>9</b> (light-cure)<br><b>7</b> (self-cure) |
| FUJILUTING S (GC)                      | 1   | 2   |
| UNICEM (3M Espe)                       | 3   | 7   |
| MAXCEM (Kerr)                          | 2   | 1   |
| MONOCEM (Shofu)                        | 3   | 1   |
| BREEZE (Pentron)                       | 2   | 2   |
| G-CEM (GC)                             | 3   | 1   |
| MULTILINK SPRINT<br>(Ivoclar Vivadent) | 3   | 2   |
| BISCHEM (Bisco)                        | 1   | 1   |

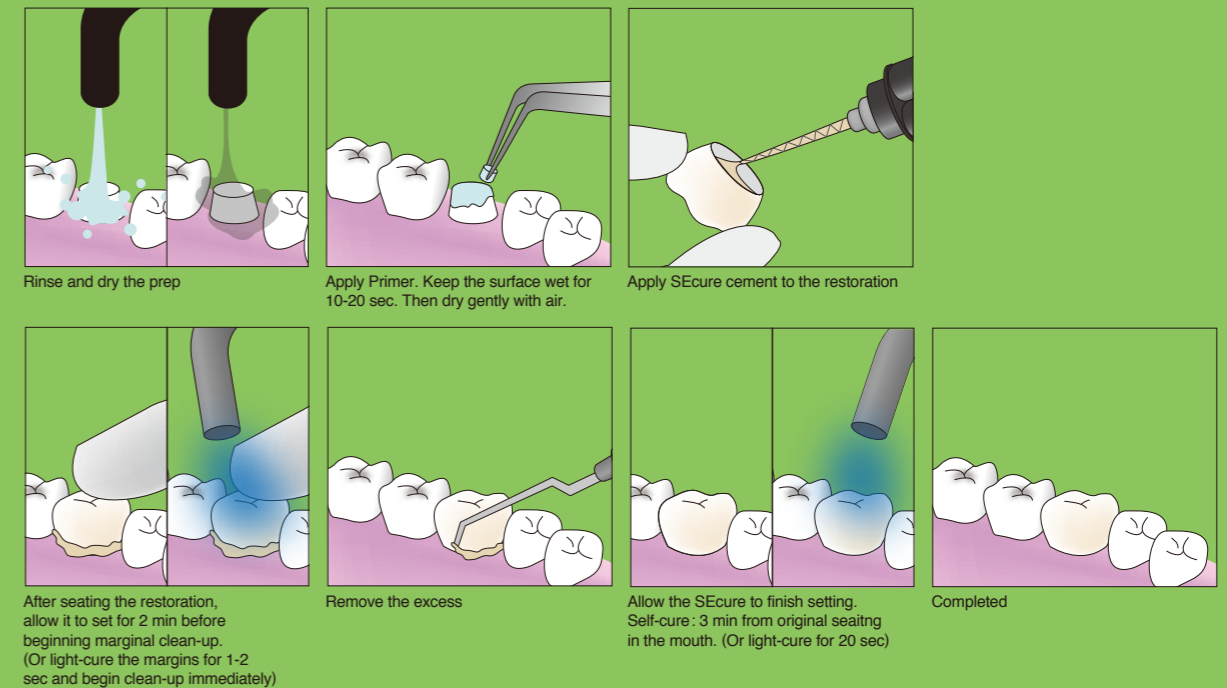
In lab tests, self-adhesive cements generally demonstrate modest tensile bond strength to tooth structure ... generally in the 1-3 MPa range. SEcure delivers 2-5 times the bond strength and virtually shuts down marginal leakage.



## CLINICAL PROCEDURE

### Extremely simple!

Apply SEcure Primer onto the cut enamel and dentin. Keep it wet for 10-20 seconds, and gently air blow the surface to dry it. Then dispense SEcure cement directly from the auto-mix tip into the restoration and seat it. That's all there is to it.



## Curing Time

SEcure is dual-cure cement, so it's completely reliable even where a curing light does not reach, e.g. under PFM crowns, down post-holes.

Light-cure ---- 20 seconds

Self-cure --- 3 minutes

## Easy Excess Removal



If you don't have time, cure the margins with a curing light for 1-2 seconds and you can start clean-up almost immediately.

## Contents of the kit

- Dual-cure Resin Cement (Shade: Translucent) 9g
- Primer 3ml
- Mixing Tip 10 pieces

## Sold separately

- Dual-cure Resin Cement with 10 Mixing Tips (Shade: Translucent, White Opaque, Dentin) 9g
- Primer 3ml
- Mixing Tip 30 pieces

SEcure is available in three shades : Translucent  
Dentin  
White Opaque